



TE TECHNOVISION ENGINEERS PVT. LTD.

nothing
breaks,
if handled
with **Care!**



We help you handle your material



Mr. Uday Kalyankar

(B.E. Production)

Mr. Uday has over 30 years of experience in B2B Sales and Marketing, Design, Engineering in Material Handling Equipments.



Mr. Sameer Patil

(B.E. Production)

Mr. Sameer has over 30 years of experience in Manufacturing, Finance and Procurement.

Technovision Engineers Pvt. Ltd (TEPL) Leaders in Material Handling Solutions, TEPL is a renowned manufacturer of material handling equipment, recognized for its superior quality, innovative solutions, and exceptional customer service. With expertise that spans beyond standard manufacturing, TEPL excels in turnkey project execution, managing every phase from design and manufacturing to supply, erection, and commissioning. This comprehensive approach underscores its capability to handle complex, large-scale projects.

Core Competencies:

- ◆ Superior Quality & Service: TEPL adheres to the highest quality standards, backed by ISO 9001:2015 certification, ensuring customer satisfaction throughout the project lifecycle.
- ◆ Turnkey Project Management: The company delivers end-to-end solutions, offering a seamless, hassle-free experience from concept to commissioning.
- ◆ Lean Manufacturing: TEPL's focus on efficient processes minimizes waste, enhances productivity, and ensures top-tier quality, setting benchmarks in the Indian industry.
- ◆ Innovation through R&D: With a dedicated in-house R&D team, TEPL drives advancements in design and technology, staying ahead in delivering cutting-edge solutions.

Modern Infrastructure:

Operating six advanced manufacturing facilities over 70,000 sq. ft., TEPL is equipped with state-of-the-art tools and technology, enabling the production of world-class material handling equipment.

Skilled Expertise:

TEPL's team of skilled professionals, combined with deep industry knowledge and advanced technology, ensures the delivery of innovative, high-quality solutions tailored to diverse industry needs.

Vision

To become a global leader in providing futuristic, technology-driven material handling solutions. We are committed to developing and delivering innovative, efficient, and cutting-edge products that enhance customer satisfaction.

Mission

Our mission is to design and manufacture reliable, innovative material handling equipment that enhances operational efficiency, safety, and sustainability for industries worldwide. We are committed to delivering top-quality products and services that exceed customer expectations.



Journey of Growth and Innovation

- 1998 Began operations in a 100 sq. ft. space in MIDC Bhosari, Pune, focusing on machinery activities.
- 2001 Expanded operations to 3500 sq. ft. in Chinchwad, Pune, with the start of manufacturing trolleys and pallets.
- 2004 Registration as a Private Limited Company.
- 2005 Relocated headquarters and main production unit to Chikhali MIDC, Pune, with a 16,500 sq. ft. facility.
Entered the design and manufacturing of Unit Handling Conveyor Systems.
- 2006 Achieved ISO 9001 certification.
- 2008 Set up a new factory to support growing demand.
- 2010 Registered with D & B under D-U-N-S.
- 2011 Awarded ISO 9001:2008 certification by TUV.
- 2012 Established a new entity: Techno Pipes and Joints.
Diversified into Hydraulic Equipment Manufacturing.
- 2014 Renewed ISO 9001:2008 certification by TUV.
Introduced design and manufacturing of Vertical Reciprocating Conveyors.
- 2015 Opened a branch in Chennai.
- 2016 Won the SME 100 award among 50,000 nominations.
Opened a branch in Ahmedabad.
- 2017 Renewed ISO 9001:2015 certification by TUV.
Launched a new segment: Expandable Storage Racks (ESR).
Set up a new manufacturing unit with a 12,000 sq. ft. area.
- 2019 Opened a branch in Bangalore.
- 2020 Renewed ISO 9001:2015 certification by TUV.
- 2021 Set up a new manufacturing unit with a 20,000 sq. ft. area.
Reached a total operational area of 70,000 sq. ft.
- 2022 Introduced a new segment: Spiral Gravity Conveyor and Gravity Chute.
- 2023 Began direct export operations.
- 2024 Developed new clamps and brackets for the Pipe and Joint System.
Launched a new segment: Aluminium Profile design and manufacturing.
- 2025 Developed new roller track for the Pipe and Joint System.

Product Range :

- VRC – Goods Lift
- Spiral Gravity Conveyor
- Truck Loading Conveyor
- Belt Conveyor
- Linear Gravity Chute
- Telescopic Belt Conveyor
- Stacker Conveyor
- Pipe and Joint Racks
- Pipe and Joint Trolley
- Pipe and Joint Assembly Tables
- Coated Pipe / ECO Pipe
- Stainless Steel Pipe
- ESD Pipe
- Roller Track
- Metal Joints (Clamp)
- Brackets



Vertical Reciprocating Conveyors (VRCs) are a vital component in efficient material handling systems. These innovative devices facilitate the vertical movement of goods between different levels within a facility, such as warehouses, factories, and distribution centres.

Unlike traditional elevators, VRCs operate through a reciprocating motion, moving a platform or carriage up and down along a guided path. This mechanism offers several key advantages. Firstly, VRCs are generally more cost-effective to install and maintain compared to conventional elevators, making them a budget-friendly solution for businesses. Secondly, they require significantly less space, making them ideal for retrofitting existing facilities or integrating into tight spaces.

VRCs play a crucial role in streamlining operations across various industries. They are widely used for:

- ◆ **Inter-floor Transportation:** Efficiently moving goods between different levels of a warehouse or multi-story facility.
- ◆ **Mezzanine Access:** Providing safe and reliable access to elevated work platforms or storage areas.
- ◆ **Industrial Material Handling:** Transporting raw materials, finished products, and work-in-progress materials within manufacturing plants.
- ◆ **Distribution Centre Logistics:** Facilitating the movement of goods between receiving, storage, and shipping areas.

By incorporating VRCs into your material handling strategy, you can enhance productivity, improve safety, and optimize the flow of goods within your operation.

Types of VRC (Vertical Reciprocating Conveyor)

- ◆ **2 Post VRC: TE- 2PV**

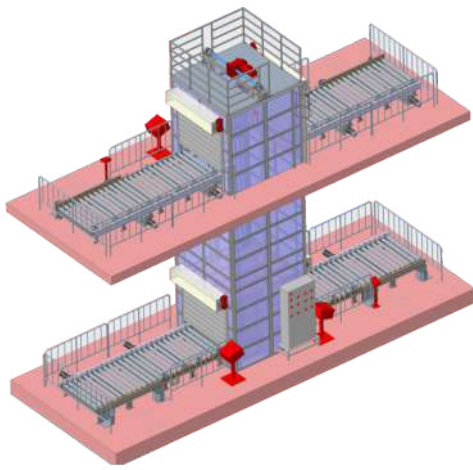
It is available with lifting capacity up to 2000 kgs. Carriage size is customized & travel height is 20m.

- ◆ **4 Post VRC: TE- 4PV**

It is available with lifting capacity upto 2500 kgs - 5000 kgs. Carriage size is customized & travel height is 30m. Entry exit are possible from all 4 sides.

- ◆ **Auto VRC: TE- AV**





Auto VRC (Vertical Reciprocating Conveyor)

Auto VRC is widely used to move material automatically without human intervention from one floor to another with great safety. It is a highly automated system.



Spiral Gravity Conveyor

A Spiral Gravity Conveyor is a space-saving material handling system designed to efficiently move packaged goods vertically downward. Utilizing the force of gravity, these systems gently guide carton boxes and crate boxes along a spiral path, minimizing the risk of damage during transport.

Key Advantages:

- ◆ **Space Efficiency:** Occupies a minimal footprint compared to traditional elevators or vertical conveyors, maximizing valuable floor space.
- ◆ **Energy Efficient:** Leverages the power of gravity, eliminating the need for external power sources and significantly reducing energy consumption.
- ◆ **Gentle Handling:** Ensures smooth and controlled descent of packaged goods, minimizing damage and protecting product integrity.
- ◆ **Ideal for Packaged Goods:** Specifically designed to accommodate various sizes and weights of carton boxes and crate boxes.



Applications:

- ◆ **Warehousing:** Efficiently move goods between floors, from mezzanines to ground levels, and to shipping areas.
- ◆ **Manufacturing:** Transport components, work-in-progress, and finished goods packaged in boxes or crates.
- ◆ **Distribution Centre:** Streamline the flow of packaged goods from receiving docks to storage and shipping areas.

Linear Gravity Chutes

A Linear Gravity Chute is a simple yet effective material handling system that utilizes gravity to move packaged goods along a straight, inclined plane. This straightforward design offers several key advantages:



Key Advantages:

- ◆ **Space Efficiency:** Linear chutes can be easily integrated into existing layouts, making optimal use of available space.
- ◆ **Cost-Effectiveness:** Relying solely on gravity eliminates the need for external power sources, resulting in lower operating costs.
- ◆ **Easy Maintenance:** The simple design minimizes the number of moving parts, reducing maintenance requirements and increasing system uptime.
- ◆ **Ideal for Packaged Goods:** Linear chutes are well-suited for handling a variety of carton boxes and crate boxes, ensuring smooth and controlled movement.

Applications:

- ◆ **Warehousing:** Move goods between different levels, from mezzanines to ground level, or to shipping areas.
- ◆ **Manufacturing:** Transport components, work-in-progress, and finished goods packaged in boxes or crates within the production line.
- ◆ **Distribution Centre:** Facilitate the movement of packaged goods from receiving areas to storage or shipping zones.

Truck Loading/ Unloading Conveyor



The Truck Loader Conveyor is a versatile and efficient solution for loading and unloading bags, carton boxes, and other goods across various industries. It is extensively utilized in retail industries, distilleries, pharmaceuticals, FMCG, textiles, packaging industries, e-commerce, warehouses, and more. This conveyor ensures seamless material handling, improved productivity, and operational efficiency.

Features:

- ◆ Smooth Conveyance
- ◆ Manpower Reduction
- ◆ Time Efficiency
- ◆ Easy Towable Transport
- ◆ And More



Telescopic Belt Conveyor (TBC)

Our Telescopic Belt Conveyor is expertly designed to optimize the truck loading and unloading process, providing a flexible, reliable, and efficient solution for managing goods in and out of trailers, containers, and trucks. Tailored for businesses that prioritize operational efficiency, safety, and cost-effectiveness, this advanced conveyor system integrates seamlessly into existing logistics workflows, significantly reducing manual labour and minimizing loading times.

Experience improved productivity and streamlined operations with our telescopic conveyor solution!

- ◆ Maximum Load: 60 Kgs/Mtr,
- ◆ Belt Speed: 15-30 Mtr/Min,
- ◆ Belt Width: 600mm/800mm/1000mm
- ◆ 3 stage, 4 stage & 5 stage option available.
- ◆ Useful for 20 feet & 40 feet container/truck
- ◆ Direction: Uni-directional & Bi-directional.

Belt Conveyor

Intro: Mobile belt conveyor is widely used in various fields to move diverse unit loads & bulk material. They are used in handling loads from one location to another within process in line production

Applications: Mobile belt conveyor used in various industries for automation purpose. Conveying bags, boxes, industrial goods etc from one place to another is easy.



Stacker Conveyor

The Belt Stacker Conveyor is a versatile and efficient material handling solution designed for stacking and transporting bulk materials, bags, and other goods in an organized and streamlined manner. Its robust design and flexibility make it ideal for a variety of industries such as warehouses, agriculture, construction, mining, and manufacturing. This conveyor system ensures optimized stacking operations, reducing manual labour while improving productivity and space utilization.

Features:

- ◆ Increase operational efficiency,
- ◆ Reduce manpower.
- ◆ Reduce operator stress.
- ◆ Improve safety

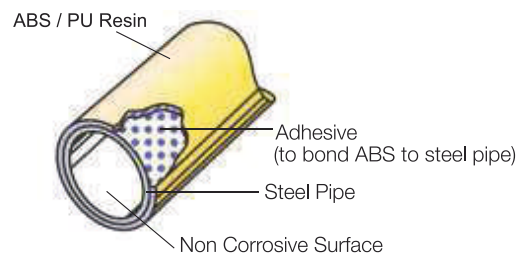


Pipe & Joints System



Technovision Pipe & Joints System is an ideal material handling solution designed to meet the diverse needs of all industries. Smart, dynamic, and flexible, this system is capable of creating a wide range of structures, including: **Racks, Trolleys, Assembly Tables, Display Boards, Gravity Flow Racks.**

The possibilities with the Pipe & Joints System are limitless. Add your ideas today and unlock endless potential for customization and innovation!



Features:

- ◆ **Convenient and Easy Modification:** Designed for seamless adjustments and adaptability.
- ◆ **High Safety and Simple Fitting:** Provides secure usage with a hassle-free, welding-free assembly process.
- ◆ **User-Friendly Assembly:** Enables quick and straightforward assembly without the need for specialized skills.
- ◆ **Durable and Clean Finish:** Coated with ABS resin, ensuring enhanced durability and a clean appearance.
- ◆ **Lightweight and Easy Handling:** The lightweight structure simplifies handling and transportation.
- ◆ **Supports Continuous Improvement:** Facilitates ongoing enhancement activities without additional complexity.
- ◆ **No Special Facilities Needed:** Can be produced without requiring specialized equipment or facilities.

TECHNO pipe is steel pipe with ABS resin coated on the outer surface, An adhesive bonds the resin to the pipe preventing separation. The inner surface is non-corrosive.

Coated Pipe / ECO Pipe

- ◆ Various colors
- ◆ Low cost
- ◆ Easy to cut

Antistatic Color Pipe / Conductive Pipe (ESD)

- ◆ Surface Resistance : $10^6 \Omega \sim 10^9 \Omega$
- ◆ Colors : Black

Note: Avoid using the Pipes near and around solvents or oils.

Pipe

Coated Pipe



COLOR OPTION IV BK GR GN BL RD

Code	Thickness
TP-0.8	0.8mm
TP-0.9	0.9mm
TP- 1	1mm
TP-1.2	1.2mm
TP-2	2mm

Conductive Pipe



SURFACE RESISTANCE $10^3 \sim 10^6$

Code	Thickness
TP-0.8	0.8mm
TP-0.9	0.9mm
TP- 1	1mm
TP-1.2	1.2mm
TP-2	2mm

Slide Pipe



COLOR OPTION IV BK GR GN BL RD

Code	Thickness
TP-0.8	0.8mm
TP-0.9	0.9mm
TP- 1	1mm
TP-1.2	1.2mm
TP-2	2mm

Stainless Steel Pipe



Code	Thickness
TSS-0.8	0.8mm
TSS-0.9	0.9mm
TSS-1.0	1.0mm
TSS-1.2	1.2mm

Plastic Parts

TE CAP 01 (IV, GR, BK) Pipe Inner Cap



TE - 114 (IV, GR, BK) Pipe Outer Cap



TE - 111 (IV, BK) Name Plate Hanger



Board fixing clamp B



Taper sleeve



Item	Colour	Treatment
BK	BLACK	Black ED Coating
ZN	ZINC	Zinc Plating
NI/CR	NICKEL CHROME	Nickel Chrome Plating

Black ED Coated



Zinc Coated Plated

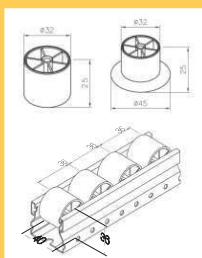
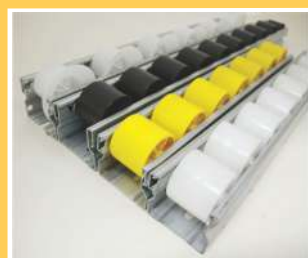


Jointing Methods



Roller Track (Placon)

40 Series

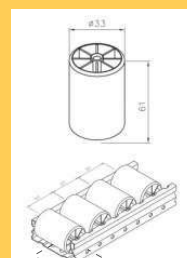


Roller Material - PP

80 Series



Regular

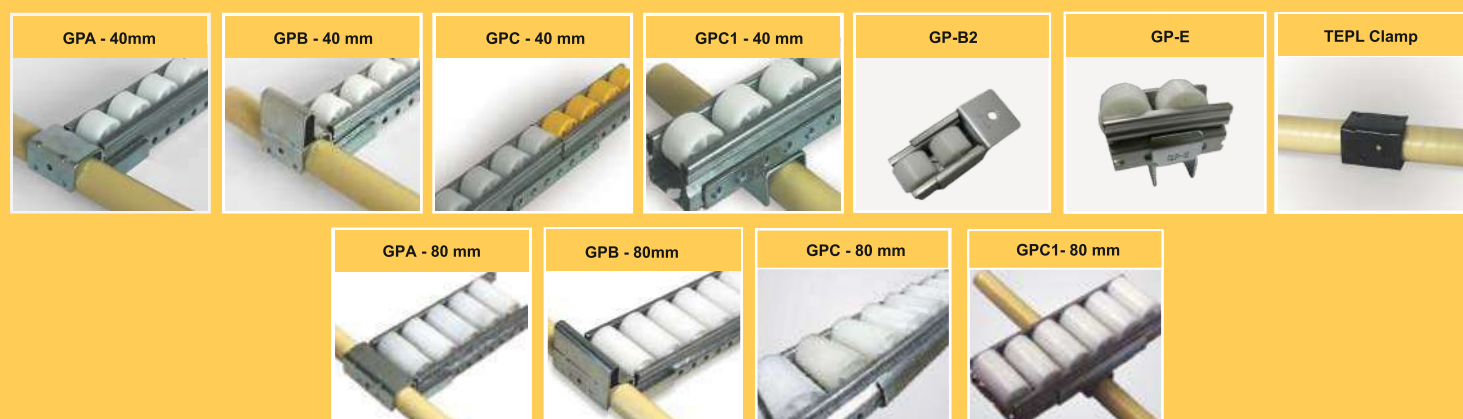


Roller Material - PP



Heavy Type Roller

Placon Mount



Slide Bracket

Bush

Slide Brackets GS-A



Slide Brackets GS-B



Rubber Bush ID 28 mm



Insert Nut (1/2")



Adjusters

Adjuster (1/2") Small
Without rubber pad



Adjuster Large
With rubber pad



Caster Strap
Cm100/ Cm200



Traction Arm



Pipe Linking Metal



Casters Wheel

Pressed Steel Wheel
Nylon PU 4"x1.25" Fix Type



Pressed Steel Wheel
Nylon PU 4"x1.25" Swivel Type



Pressed Steel Wheel Nylon PU
4"x1.25" Swivel with Brake Type



Pipe Inserted Wheel
Nylon PU 4"x1.25" Swivel Type



Pipe Inserted Wheel Nylon PU
4"x1.25" Swivel with Brake Type



Tag Holder

NP - 0120



NP - 0180



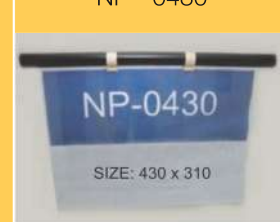
NP - 0220



NP - 0300

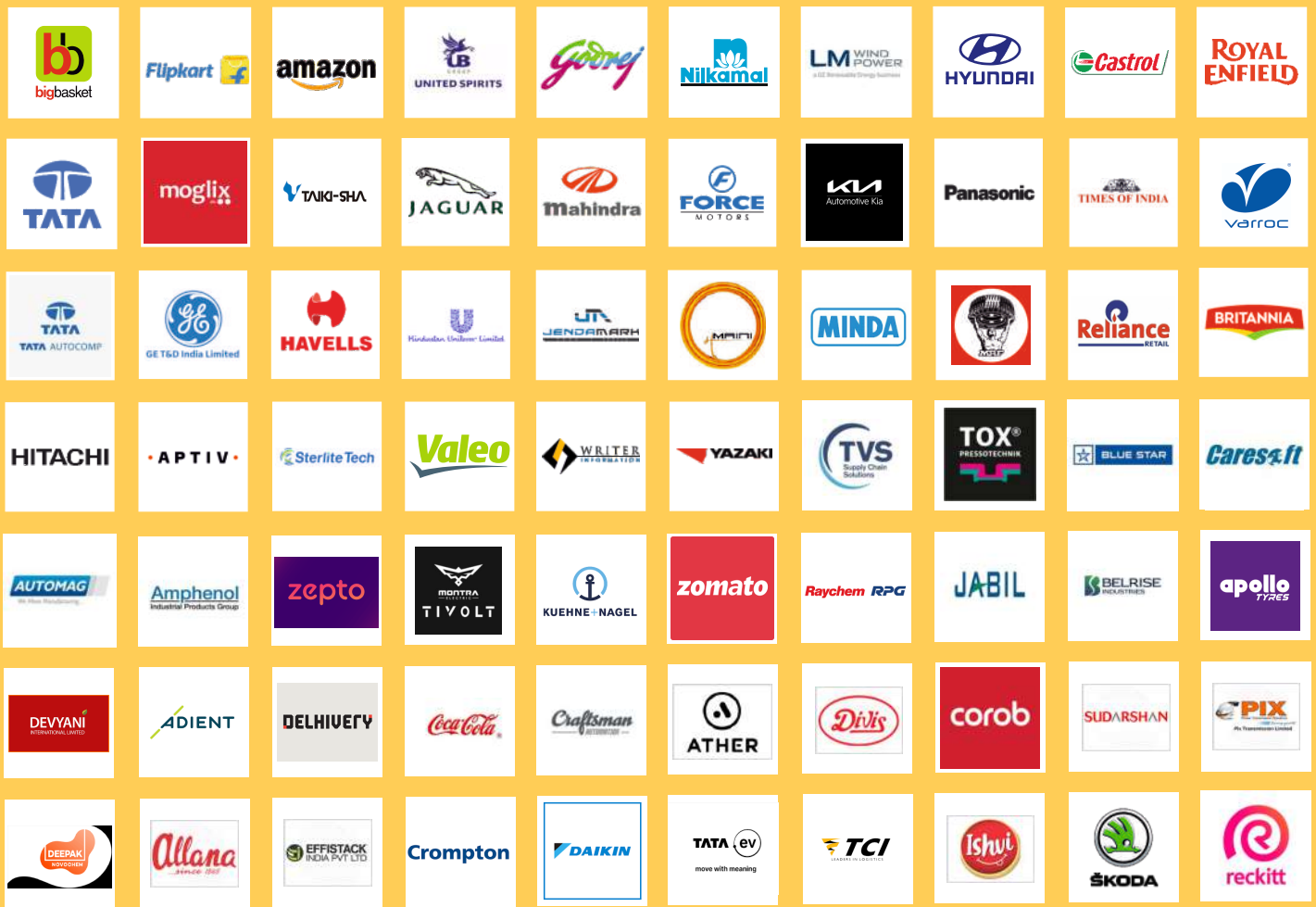


NP - 0430





Our Esteemed Customers



TECHNOVISION
ENGINEERS PVT. LTD.

An ISO 9001 : 2015 Certified Company

Technovision Engineers Pvt. Ltd.

📍 Gat No. 1559-1560, Dehu Alandi Road, Shelar Vasti, Chikhali, Pune 412 114

☎ +91 7774020056 / 9225345039

✉ sales@technovisionengrs.com / contactus@technovisionengrs.com

🌐 www.technovisionengrs.com

